

2014 Annual Report

# Sustenance



**EMERGENCY  
FOOD  
NETWORK**





# EFN 2013 by the Numbers

EFN Distributed

**\$12**

Worth of Food for  
Every \$1 Donated.

Total Visits  
to Pierce County  
Food Programs:

**1,404,755**

23,153 More Than in 2012  
69% More Than in 2008

Visits on Behalf  
of Clients Over 55:

**249,948**

18%

Client Visits  
Each Month:

**117,062**

Visits on Behalf  
of Clients Under 18:

**503,765**

36%

Pounds of  
Produce Distributed  
from Mother Earth Farm

104,000

Total Pounds of  
Food Distributed by EFN:

15.6 Million

15.1 Million in 2012

Total Meals Served  
in Pierce County:

17.1 Million

16.7 Million in 2012

Total Hours Given  
by EFN Volunteers:

20,949

**Providing Pierce County with  
a consistent, diverse and  
nutritious food supply so that  
no person goes hungry.**



# Executive Director Report

Helen McGovern-Pilant



In January, I gave Tim, a UWT graduate student, a tour of our warehouse. He’s shadowing our Board of Directors to learn about nonprofit governance.

As we made our way through stacks of 50-pound bags of beans, oats, and rice, and the truckloads of onions and potatoes we had on pallets, ready to be sorted for pickup by the 60+ food programs we serve, he seemed visibly moved.

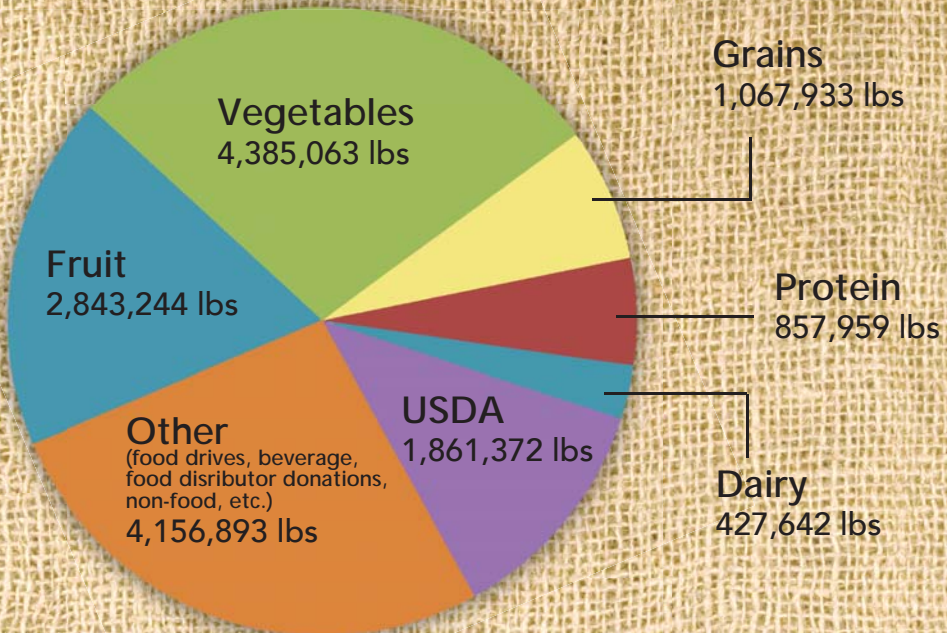
He explained to me that his family immigrated to America from

Ukraine when he was in grade school. They relied on food banks to get by in those early years. As I showed him the grocery store-quality produce in our cooler, he said “our food banks didn’t have food this nice when I was a kid.”

More than 15.6 million pounds of food passed through our warehouse in 2013. Over half of that food comes from regional farms, is donated for free (except for delivery costs) through our partnership with Northwest Harvest and Rotary First Harvest, and is of high quality and nutritional value.

Each week, we receive an average of two truckloads of potatoes, onions, apples, cherries, tomatoes, or whatever might be in season at the time. Combined with the \$500,000 that EFN spends annually on healthy staples (rice, beans, oats, ground turkey, canned vegetables, etc.), produce grown at our Mother Earth Farm, food from the USDA, and large donations from grocery store outlets and other distributors, a full 80% of the

## EFN 2013 Distribution



food that we distribute is healthy and nutritious. The rest might be too, but we don't have the time to read the label on every donated can of food.

With last year's record 1,404,755 total client visits to Pierce County food programs in our network, we're very proud that we're keeping pace with the need, and even prouder to say that we do not sacrifice quality in the name of quantity. We are there for families like Tim's in their time of need.

With federal cuts to food stamps and thousands of Pierce County residents coming off unemployment benefits while jobs are still scarce, the need for emergency food is not going away. We know the system would not work without the support of caring and generous individuals, businesses, foundations, and government entities. As always, we thank you for helping us to provide healthy, nutritious food for those who need it most.

## Board of Directors

**Therese Pasquier** - Chair  
Paladina Health

**Sharon Snuffin** - Vice Chair  
Snuffin's Catering

**Jode Beauvais** - Treasurer  
Moss Adams

**Lauren Dammeier** - Secretary  
Community Volunteer

**Al Bacon** - Past Chair  
LaborWorks, Inc.

**Jerry Beckendorf**  
Retired Public Employees Council

**Theresa Boyle**  
MultiCare Health System

**Louise Bray**  
Schnitzer

**Berta Brynestad**  
Peninsula School District

**Ron Hamakawa**  
Franciscan Health System

**Paula Henson-Williams**  
Pierce College

**Paul Long**  
Opus Bank

**Brad Maxa**  
Washington Court of Appeals

**Craig Richmond**  
Simpson Lumber Company

**Michael Sanders**  
Mix Sanders, PLLC

**Stephanie Schramm**  
Schramm Marketing

**Darren Schuldheiss**  
Key Private Bank

**Adam Small**  
Simpson Lumber Company

**Brenda Wiest**  
Teamsters Local Union No. 117





# Mother Earth Farm

## Q and A with Farm Manager Canyon Little



**Q: Canyon, how did things go out at Mother Earth Farm in 2013?**

A: The 2013 growing season was surprisingly abundant, considering we let about 1/3 of the farm lie fallow for roughly 18 months. Overall the season proved to be a big success because of the amazing support we received from staff, volunteers, and the wonderful women from Purdy.

**Q: You're referring to the women each year from the Washington Corrections Center for Women who work at the farm four days each week? What was their experience like?**

A: Each woman on the crew last year was involved in an individual project that enhanced the farm in one way or another, while offering many learning opportunities. I am proud to say that each one followed through with their respective projects to the end and educated each other along the way.

**Q: You mentioned letting part of the farm lay fallow. Why did we give 1/3 of the land a rest?**


A: We rested a large portion of the land in order to restore fertility and biologic activity in the soil.

**Q: What did we grow a lot of at the farm last year?**

A: Last season provided many dry and hot days, which thankfully resulted in a bountiful tomato harvest. We also produced a lot of kale, collards, and swiss chard.

**A monthly donation of \$25 provides 300 lbs of fresh produce to food bank clients.**





Mother Earth Farm grows more than 100,000 lbs of fresh produce each year, delivered to food banks the same day harvested.

**Q: Do any volunteer efforts from last year stand out?**

A: Last year, there was a volunteer by the name of Wontae Chang. He volunteered for roughly a week and proved to be a big help. He thoroughly weeded several sections, including a carrot and a basil section, that had a high produce yield. He was a delight to have around and I wish him the best as he works to become a dentist.

**Q: What are your expectations for the 2014 growing season?**

A: I expect the section we rested last year to have a highly productive season. Also, I hope to expand the number of food banks that Mother Earth Farm provides produce to.

**Q: Anything else you'd like readers to know?**

A: We are looking forward to another successful year at Mother Earth Farm, and are always happy to have new and returning volunteers visit the farm and plant some starts and pull some weeds.

## Community Shared Agriculture

Help share Mother Earth Farm's bounty by purchasing full or half-shares of the farm on behalf of hungry families and individuals in Pierce County.

**Full Share** - A monthly donation of \$50 (\$600) provides 600 lbs of fresh, organically grown produce to food bank clients.

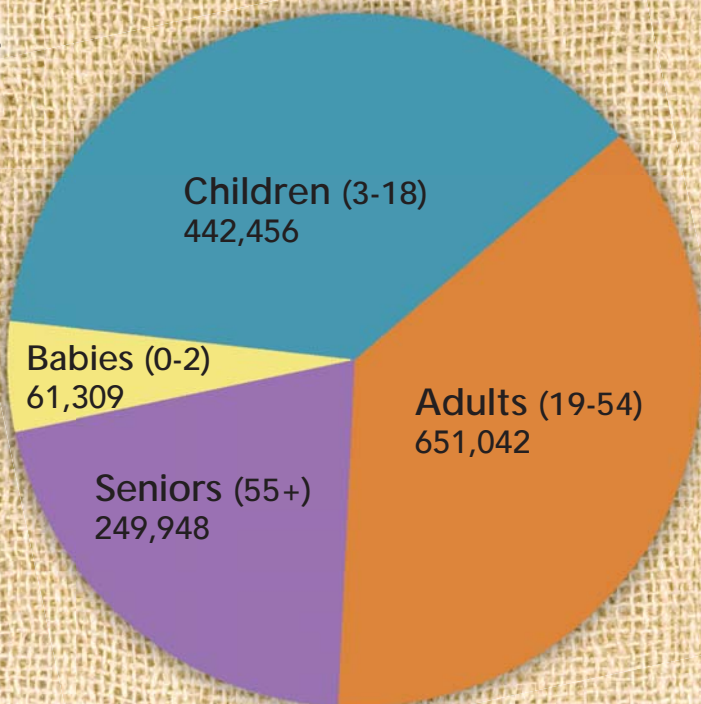
**Half Share** - A monthly donation of \$25 (\$300) provides 300 lbs of fresh, organically grown produce to food bank clients.

**Sign up for monthly payments!**

Contact us at (253) 584-1040 or [info@efoodnet.org](mailto:info@efoodnet.org)



# Client Visits in 2013



## EFN Staff Profile

Kevin Lasinski



**Years at EFN:** Three

**Job:** Repack Coordinator/  
Warehouse Assistant

**Responsibilities:** Provide support for volunteers with EFN's Repack Project, build orders for food banks, meal sites, and shelters, operate our forklifts.

**Interesting Fact:** Kevin is an amazing dad, raising his two sons, Dillin (5) and Michael (7), full time. "They're my drive," says Kevin.

**What Kevin likes about working at EFN:** "I love working with all of the volunteers and seeing how dedicated and loyal they are because they keep returning. I leave work feeling like I've given back."

**What else you should know that might interest you about Kevin:** He started out at EFN as a "CJ." That's what we call participants in Goodwill's Community Jobs Program. EFN hosts CJs in our warehouse and front office to help us with our day to day



**Duplicated Visits**  
**1,404,755**

**Unduplicated Visits**  
**215,341**

**Total Visits**  
**Per Month**  
**117,062**

operations and to provide valuable job skills for people experiencing unemployment. Kevin worked with Northern Fish, a seafood outlet, but lost his job and was out of work for a year. As a CJ, he took a forklift certification class through EFN (Ken Hess, EFN's Distribution Manager, is a certified trainer) before being offered part-time work in our warehouse. EFN hired him full-time soon after that. Born in Olympia into a military family, Kevin lived in Germany for four years prior to returning to Tacoma, where he attended Grey Middle School and Mt. Tahoma High.

## **EFN Staff**

**Helen McGovern-Pilant**  
Executive Director

**Elizabeth Chipps-Freeman**  
Associate Development Director

**Audrey Cox**  
Administrative Assistant

**Joe Futch**  
Driver

**Kathryn Gonner**  
Office Assistant

**Ken Hess**  
Distribution Manager

**Merrit Hoeh**  
Volunteer Coordinator

**Dan Hunter**  
Warehouse Coordinator

**Jeff Klein**  
Development Director

**Kevin Lasinski**  
Repack Coordinator

**Canyon Little**  
Farm Manager

**Anika Moran**  
Assistant Farm Manager

**Ron Pace**  
Finance Manager

**Joanna Rasmussen**  
Development Associate

**Jim Wells**  
Delivery Driver

**Kat Westerdahl**  
Partner Program Manager

# Corporate/Civic Partner Program



Corporate/Civic partners are companies and organizations with a special tie to EFN. We feature our corporate partners prominently whenever possible on our website, in newsletters, on Facebook, and anywhere else we can promote our partnership.

Corporate/Civic Partners engage in our efforts to fight hunger in at least three of the following ways:

- Contribute \$1,000 or more
- Host a food or fund drive
- Place a link to EFN on your website
- Have an employee involved on EFN's board or a committee
- Purchase a table at EFN's auction for \$1,500
- Bring a group to volunteer at EFN's warehouse or farm
- Go above and beyond in a special way for EFN

## 2014 EFN Corporate/Civic Partners:

Bank of America  
Boeing Company  
Chuckals  
City of Lakewood  
DaVita  
Financial Insights  
Franciscan Health System  
Gig Harbor Sportsman's Club  
Gordon Thomas Honeywell  
Joint Base Lewis McChord  
LaborWorks, Inc.  
MultiCare Health System  
Murray Pacific Corporation

Pacific Lutheran University  
Pierce College  
Pierce County Government  
Quaker Oats Pepsico  
Rotary Club District 5020  
Schnitzer  
Simpson Lumber Company  
Snuffin's Catering  
TPCAR  
Teamsters Local Union No. 117  
Totem Ocean Trailer Express  
Transportation Club  
Waste Connections



# Recognition Breakfast

Wednesday, April 16, 2014

Honoring individuals and businesses for their dedication to helping hungry children, adults and seniors in Pierce County.

## Silver Spoon Awards

Franciscan Foundation

LaborWorks

Pierce County Library System

Rogers High School Key Club

Tacoma Public Utilities

Transportation Club of Tacoma

Trinity Lutheran Food Bank

## David P. Ottey Lifetime Achievement Award

Associated Ministries

## Retiring Board Members

Jim Brock

Jim Whitacre



# Ambassador Board

EFN's Ambassador Board is a group of young professionals dedicated to raising awareness about hunger in our community.

## Members

**Ali Criss - Chair**  
Financial Insights

**Kate Burrows**  
Pierce College

**Boris Hodak**  
Boeing Company

**Mayli Hodak**  
Umpqua Bank

**Josh Howard**  
LaborWorks, Inc.

**Steve Johnson**  
Schnitzer

**Jeff Shearer**  
LaborWorks, Inc.

Our members provide direct service as well as fundraising support to Emergency Food Network. Every Ambassador Board member brings unique talents and resources to help us fulfill our mission. Serving on the Ambassador Board fosters personal and professional growth of future leaders of our community.

## Join the Ambassador Board!

For more information contact:  
Elizabeth Chipps-Freeman  
Associate Development Director  
(253) 584-1040, [elizabeth@efoodnet.org](mailto:elizabeth@efoodnet.org)

# Casino Royale



# June 28

TWO THOUSAND FOURTEEN

7:00 - 11:00 PM

**TACOMA MOUNTAINEERS CLUB**  
2302 N 30th St, Tacoma

**Emergency Food Network's Ambassador Board is hosting its first ever Casino Royale Fundraising Event, with all proceeds benefiting EFN.**

### Your \$75 ticket includes:

- 3 beer/wine tickets
- Appetizers
- \$1,000 of "funny money" for gambling
- Valet Parking

Come eat, drink, and gamble for a great cause!

**For Tickets: (253) 584-1040 or [info@efoodnet.org](mailto:info@efoodnet.org)**



# Abundance

Dinner and Auction • Saturday, October 25, 2014

Share your Abundance in support of Emergency Food Network! This year's event will feature a delicious dinner, exciting live and silent auctions, and a meaningful opportunity to give back to your community. Proceeds from this special night will provide emergency food for low-income children, adults and seniors in Pierce County.



\$100 per seat • Tables of 10

RSVP: 253-584-1040  
abundance@efoodnet.org

Sponsorship and volunteer opportunities available.

**6:00pm - 10:00pm**  
**McGavick Conference Center**  
**Clover Park Technical College**

## 2013 Funding Sources

City/County  
\$131,950

Corporate  
\$95,510

Miscellaneous  
\$8,797

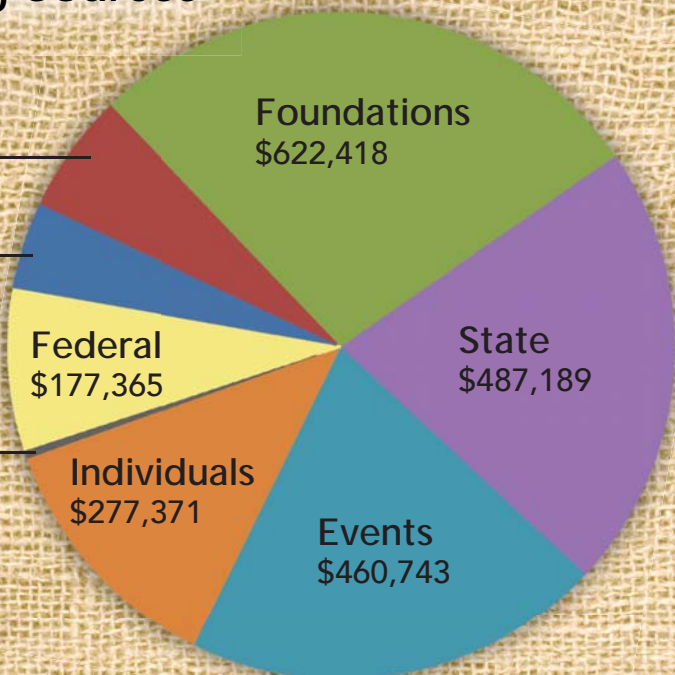
Federal  
\$177,365

Individuals  
\$277,371

Foundations  
\$622,418

State  
\$487,189

Events  
\$460,743



# Movit

## Feeding Pierce County by the Truckload



Emergency Food Network distributes more than 15.6 million pounds of healthy, nutritious food annually to over 60 food banks, meal sites, and shelters in Pierce County. Through relationships with Northwest Harvest, Rotary First Harvest, and farms in Oregon and Eastern Washington, EFN receives trailers full of potatoes, onions, apples, etc. 2-3 times each week, costing EFN only the delivery expense.

When there's a load available, EFN posts on our Movit Blog, allowing generous truckers and trucking companies to offer to haul the load as a donation to EFN.

Thank you to Gordon Trucking and Waste Connections for generously hauling 680,000 lbs of food in 2013!

Help us Movit!     [www.efnvolunteer.weebly.com](http://www.efnvolunteer.weebly.com)



EFN's Expenses per Client Visit			
2013.....	\$1.50	2010.....	\$1.71
2012.....	\$1.45	2009.....	\$1.69
2011.....	\$1.55	2008.....	\$2.13



# EMPTY BOWLS



**SATURDAY  
NOVEMBER 22**

**1:00PM-3:30PM**

**Charles Wright Academy  
7723 Chambers Creek Rd W  
Tacoma, WA 98467**

**Shop for beautiful bowls  
made by area artists.**

**Enjoy soups by some of the  
best local chefs/restaurants.**

**Free Admission. Free soup with  
bowl purchase. Bowl prices vary.**

**100% of all proceeds  
from the event benefit**



**Sunday, October 5, 2014**

For more information visit:  
[www.associatedministries.org](http://www.associatedministries.org) or  
[www.efoodnet.org](http://www.efoodnet.org)



# Feedback from Our Partner Programs



"Through our partnership with EFN, we are able to provide meat for the first time and more protein rich-products. Given the short time frame of working with EFN, we estimate that our purchasing costs have decreased by 1/3."

"With the Co-op food purchasing program, we are able to provide a better assortment of food items at least once per month for our clientele. Keep up the outstanding work!"

"We greatly appreciate the ability to order specific specialty food items that we need through our Co-op allocation. Thank you! Without this program, we would not be able to serve our community."

"We could not function without the services EFN provides. We find that EFN does an excellent job in providing enough quality food for us."

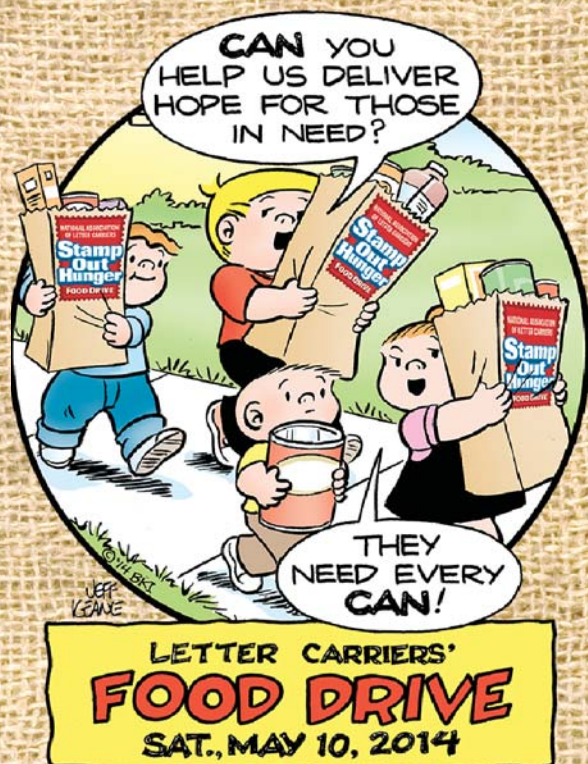
"Our experience with EFN has been terrific. We especially appreciate Kat and how she treats us like family, not just another food bank. Thank you for everything!"

"We really appreciate your agency and the service you provide. We also appreciate your great staff!"

"Nativity House receives excellent service from EFN. Thanks so much for all that you do."

"EFN has been a blessing for our program and has allowed us to continue to meet the need. Because of this, we are able to reach out to those who would have fallen through the cracks. Thank you EFN!"





Saturday, May 10 marks the date of this year's National Association of Letter Carriers Food Drive. This event raises over 300,000 pounds of food each year to help feed hungry children, seniors and adults who visit food banks, shelters and meal sites 117,000 times each month.

Local letter carriers collect all of the food donated by the community. EFN sorts and distributes your donation to local emergency food programs throughout Pierce County.

Simply leave a bag of food by your mailbox on Saturday, May 10!

# BREAKING HUNGER

## Trap Shooting Tournament

Friday, August 1, 2014

Gig Harbor Sportsman's Club  
9721 Burnham Dr NW  
Gig Harbor, WA 98332

For more formation contact  
253-584-1040 or [jeff@efoodnet.org](mailto:jeff@efoodnet.org)  
or visit [www.efoodnet.org](http://www.efoodnet.org)



# Volunteer at EFN!



## How to Get Involved...

### Repack Project

Prepare food for distribution by repackaging bulk items into family-sized servings. Repacks occur at our Lakewood Distribution Center on Tuesday, Thursday, and Saturday, with morning and afternoon sessions available.

### Mother Earth Farm

Help provide a fresh food option to local emergency food sites by planting seeds, weeding, and harvesting produce at our 8-acre organic farm, located in the Puyallup Valley. Opportunities are available spring, summer, and fall on Friday and Saturday.

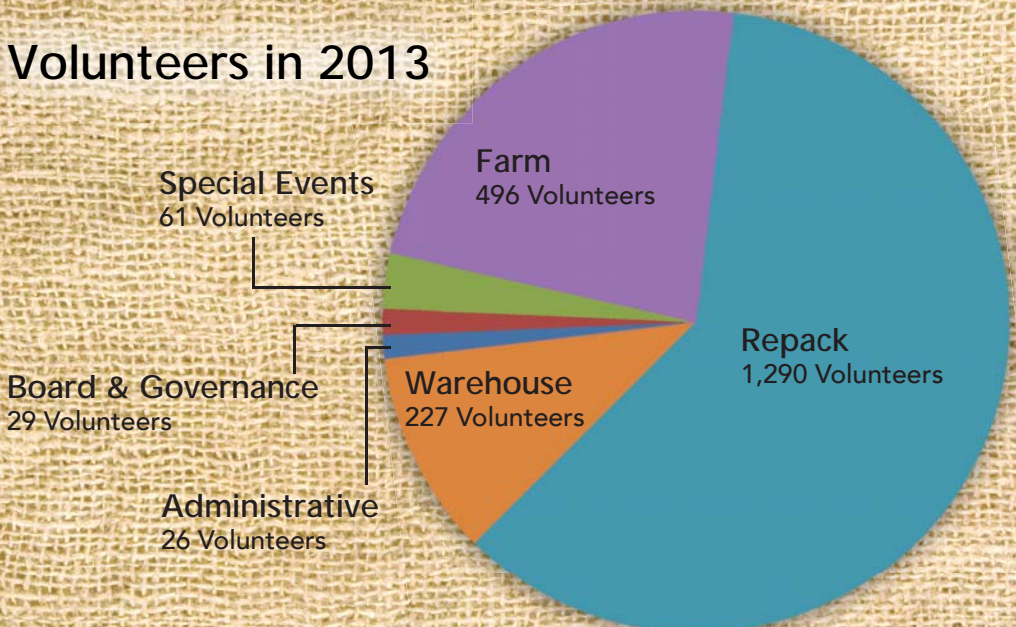
### Food and Fund Drives

Raise awareness of hunger in our community while collecting food for people in need. To learn more, request our Food and Fund Drive Information Kit!

### Special Events and Administration

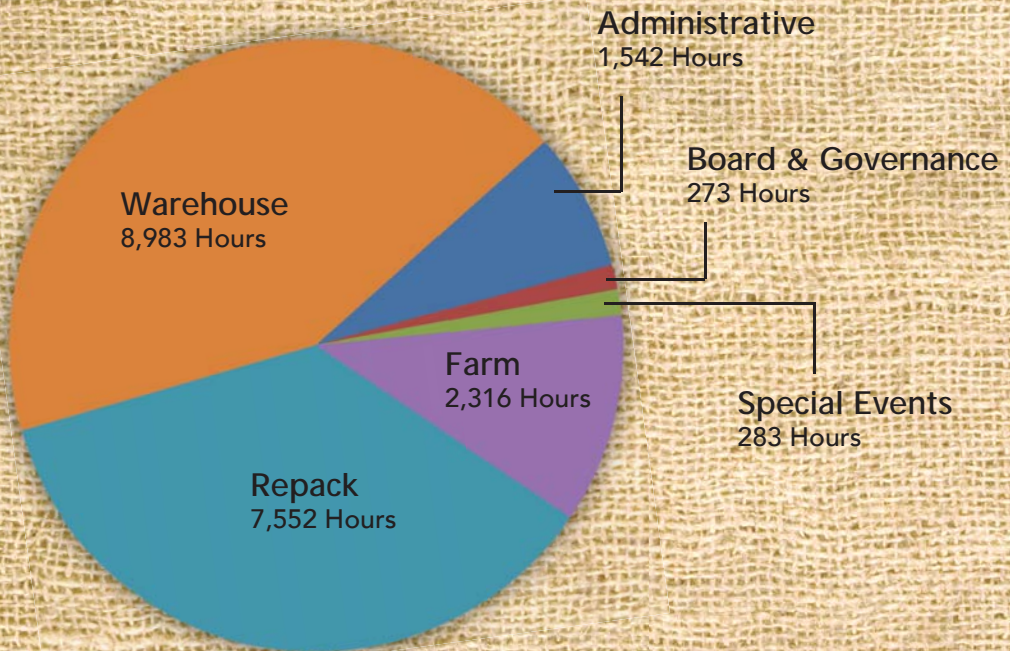
Help with data entry, event set-up, registration, and more!

## Volunteers in 2013





# 2013 Volunteer Hours



## Frequently Asked Questions

### How old do I have to be to volunteer?

The minimum age to volunteer at the Repack Project and at our special events is 15. There is not a minimum age to volunteer at the farm.

### Can I volunteer with a group?

Yes! Businesses, schools, and civic groups are welcome! Groups as big as 15 can be accommodated at a Repack. We can accommodate larger groups at the farm.

### Do I need to have experience?

No. Experienced EFN staff provide training and supervision at all volunteer events.

### How do I learn more?

Contact our Volunteer Coordinator at [volunteer@efoodnet.org](mailto:volunteer@efoodnet.org) or (253) 584-1040. View EFN's event schedule at [www.efoodnet.org](http://www.efoodnet.org).



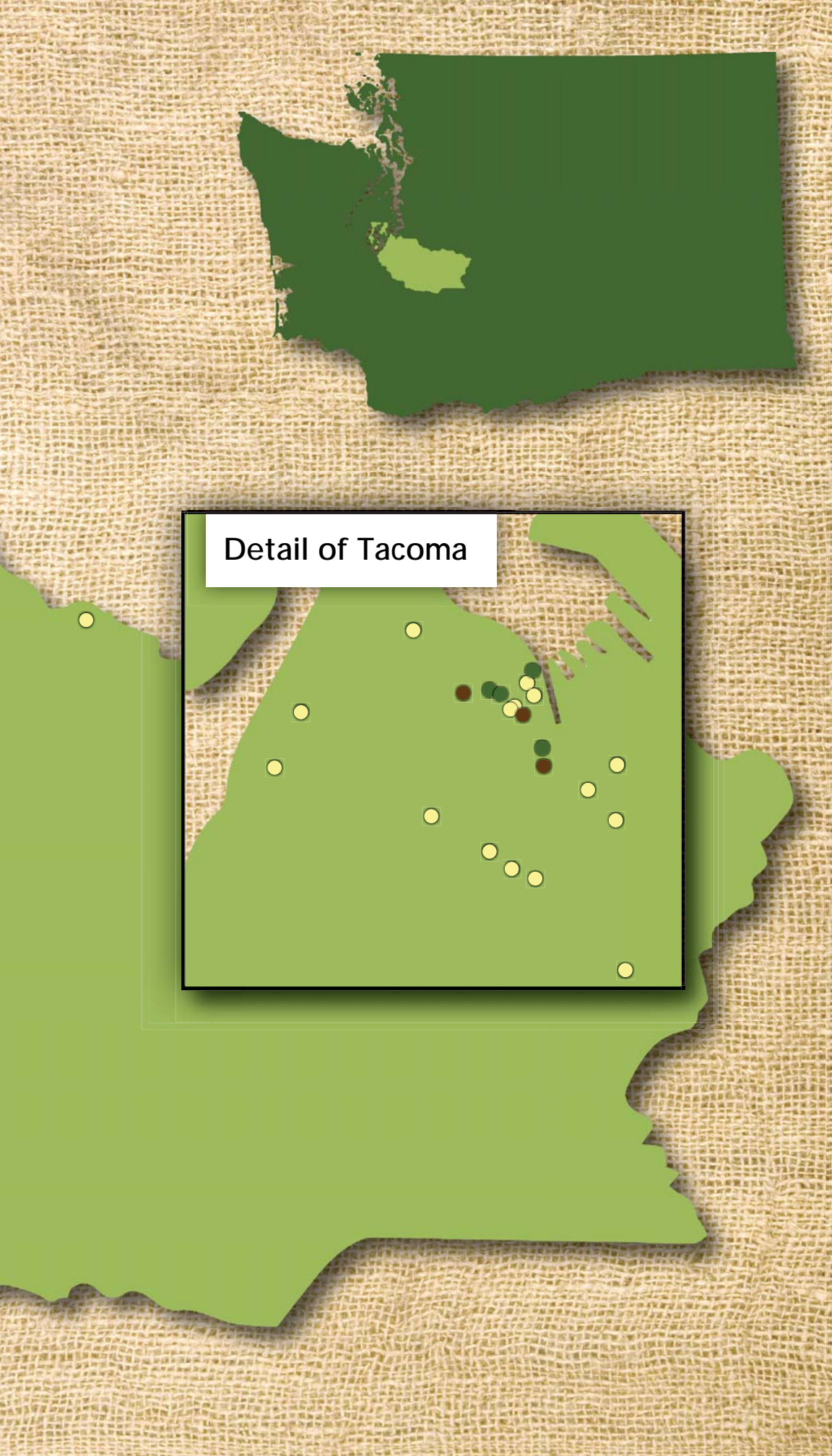


# Locations of EFN's Partner Programs



- Food Bank
- Hot Meal Site
- Shelter





Detail of Tacoma

# 2013 FOOD DRIVES

The following businesses and individuals held food drives for EFN in 2013, helping us to accommodate the 117,000 monthly visits to food programs in Pierce County each month. We apologize for any names we may have missed or misspelled. Thank you for your commitment to helping EFN ensure that no person goes hungry.

## 100,000 pounds and above

National Association of Letter Carriers

## 10,000-99,999 pounds

Boeing Company

## 1,000-9,999 pounds

A Storage Center  
Bunce Rental, Inc.  
Children of the Summer  
Doug Miller  
Fallen Officer's Food Drive  
Graham-Kapowsin High School  
Harbor Christian Center  
International Association of Machinists  
& Aerospace Workers  
Joint Base Lewis McChord Commissory  
K&W  
West Pierce Fire Department

Lynden Transport Inc.  
Mountain View Funeral Home, Memorial  
Park & Crematory  
Pierce County Library System  
Port of Tacoma  
American Cancer Society  
Safeway  
Supreme Emblem Club of Tacoma #441  
Tacoma South Sound Sports - Let's Play!  
Totem Ocean Trailer Express  
Washington State Bankers Association  
Washington State Office of the Governor

## 1-999 pounds

AA Party Rentals  
Alaska Gardens Health Center  
AmericanWest Bank  
Bridgeview Estates  
Broadway Center for the Performing Arts  
Church of Jesus Christ of Latter-day Saints  
City of Lakewood  
City of Lakewood Youth Council  
Clover Park High School  
Department of Social and Health Services  
Dockyard Derby Dames  
Earthwise Architectural Salvage  
Emerald Home Furnishings  
Expedia  
Figures  
Franciscan Health System  
Gig Harbor Counseling Center  
Gordon Trucking  
HomeStreet Bank  
International Brotherhood of Electrical  
Workers  
Interstate Distributor Co.  
Jacques Bega  
Jessie Bonley  
John Weber  
Les Schwab Tire Center  
Lexus of Tacoma  
Moulding and Millwork  
Olympic Sports & Spine Rehabilitation  
Pacific Lutheran University  
Panattoni Development Company

Park Lodge Elementary School  
Personal & Pet Concierge LLC  
Pierce County IT Department  
Pierce County Public Works & Utilities  
Point Defiance Specialty Beers  
and Taproom  
Progress Rail Services  
Puget Sound Christian School  
Puget Sound Energy  
RAM Restaurant and Brewery  
RE/MAX  
Real Estate Association of Puget Sound  
Schnitzer  
Sharon Snuffin Birthday Food Drive  
Silver City Brewery, LLC  
Simpson Tacoma Kraft Company, LLC  
Skyline Properties  
Slavonian-American Benevolent Society  
Stadium Historical District Business  
Association  
Swiss Restaurant and Pub  
Tacoma Public Schools  
Tacoma Public Utilities  
Teamsters Local Union #117  
Tevis Rose  
The Club at Gig Harbor  
The News Tribune  
Toddy Reid  
U.S. Bank  
United Food and Commercial Workers  
University of Puget Sound





## Host a Food/Fund Drive for EFN!

Looking for a meaningful way to take action and a great opportunity to get involved? Food drives and fund drives raise awareness of hunger in our community, collect food for people in need, and play an essential role in the fight against hunger. Whether it's your child's school, your place of worship, your business, your local Scout Troop, or any other caring group, every item and dollar you donate to a food or fund drive makes a difference to a hungry person.

Let EFN help coordinate your efforts with posters, bins, and delivery and pick-up of items. Visit our website at [www.efoodnet.org](http://www.efoodnet.org) to download our Food and Fund Drive Coordinators' Kit.

E-mail [volunteer@efoodnet.org](mailto:volunteer@efoodnet.org) or call (253) 584-1040 with any questions you may have about your upcoming food drive.





## 2013 DONORS

The following individuals and businesses are active participants in the system of generosity, supporting those less fortunate in our community. We apologize for any names we may have missed or misspelled. Please note that event tickets and items purchased at events are not included in these totals. Thank you for your commitment to helping EFN ensure that no person goes hungry.

### \$50,000 and above

Associated Ministries Hunger Walk  
Ben B. Cheney Foundation  
City of Tacoma  
Gary E. Milgard Family Foundation  
Gottfried and Mary Fuchs Foundation  
Pierce County Community Connections  
Puyallup Tribe of Indians  
State of Washington  
Walmart Foundation

### \$5,000-\$9,999

Affirma  
The Bamford Foundation  
Bank of America  
Boeing Company  
John & Angela Connolly  
De Falco Family Foundation  
Dimmer Family Foundation  
Franciscan Health System  
Glaser Foundation  
KeyBank Foundation  
Peter Philley & Monica Bulter  
Henry Schatz  
Simpson  
Sharon Snuffin  
South Tacoma Honda  
State of Washington  
The Fund for Women and Girls  
The Titus Will Families Foundation  
United Way of Pierce County  
William Kilworth Foundation  
Windermere Foundation  
Woodworth Family Foundation

### Special thanks to anonymous donors who gave over \$3,000.

We would like to thank all supporters of EFN who have chosen to give without recognition. In total, these generous individuals and organizations have donated over \$3,000. Thank you!



## \$10,000-\$49,999

Bruce W. Gilpin Memorial Foundation  
City of Lakewood  
Costco  
Michael & Liz Dunbar  
Florence Kilworth Foundation  
Frances C. Heidner Fund  
George & Dorothy Babare Family Foundation  
The Hendrix Foundation  
Darrell & Anne Jesse  
Johnson & Haeffling Family Foundation

Clara Kinner Ladd  
Muckleshoot Indian Tribe  
Pierce County Budget & Finance  
Safeco Insurance Foundation  
SL Gimbel Foundation  
The Bank of America Charitable  
Foundation  
The Driscoll Foundation  
Ueland Foundation  
Waste Connections

## \$2,500-\$4,999

Timothy & Lauren Atwill  
Committee to Elect David  
Ingrid Dammeier  
Fidelity Charitable Gift Fund  
Golden State Foods  
The Hyde Family Foundation  
June and Julian Foss  
Foundation  
Bonnie Kern  
LaborWorks, Inc.  
Dorothy Lewis  
Nancy Luhman

The Mary Redman  
Foundation  
Lauren Mehl  
James Murray  
L. T. Murray, Jr.  
Murray Pacific Corporation  
George Pilant & Helen  
McGovern-Pilant  
Scott & Katie Sabo  
Schnitzer  
The Schoenfeld-Gardner  
Foundation

Claus Schroeder  
Jessica Schultz  
Tacoma Pierce County  
Association of Realtors  
The Ram  
Buck Thompson & Joanne Titus  
Transportation Club of Tacoma  
The Emily Hall Tremaine  
Foundation, Inc.  
John Van Buskirk &  
Kitty-Ann van Doorninck

## \$1,000-\$2,499

American Endowment Foundation  
Paul & Peggy Anderson  
Julian & Stephanie Ayer  
Bay Equity, LLC  
Aaron Bemiller  
David & Janet BeMiller  
Carolyn Bjerke  
BNY Mellon Powering Potential Fund  
Kent & Theresa Boyle  
Broadway St. Fund  
Ben & Erin Brooks  
Gordon Bryant  
Bart & Berta Brynstad  
Tony & Linda Buhr  
Judith Bumbaugh  
Joel Camp & Nancy Olsten  
Thomas & June Camp  
Don & Gretchen Campbell  
Carlile Transportation Systems  
Keneth & Suzan Chipps-Freeman  
Barbara Clift  
Ronald & Linda Coleman  
Daniel & Cheryl Comsia  
Leslie Cummings  
CW Title  
Bruce & Lauren Dammeier  
David Fogg Family Foundation  
DaVita, Inc. Charity Committee  
Susan Eidschink  
Joan Eisenhardt  
Richard & Mary Ellingson  
Fidelity National Title Services Holdings  
Financial Insights Inc.  
Bill & Betty Fleming  
Austen Freeda  
David & Betty Fry  
David Garza  
Karen George  
Donna Gibbs  
Paul Gingrich, Jr.  
Cornia Going  
Gordon Thomas Honeywell  
John & Jennifer Guadnola  
Ron Hamakawa

Mark & Janet Hanks  
Harbor Christian Center  
Harkness Furniture  
Michael & Susan Harlan  
Clayton & Lynne Hayes  
Chris & Karen Hruza  
I.P. Callison & Sons  
Inn at Gig Harbor  
J & B Sales Company  
Michael Janukowicz  
Donald & Mary Johnson  
Wild Bill Jones & Dyann Lyon  
Bruce & Sara Kendall  
Clyde & Sydna Koontz  
Rod & Shelley Ladd  
Wayne & Sally Larson  
Jennifer Leaf  
Jason & Samantha Light  
Longbranch Enterprises, Inc.  
Margery Lovely  
Christopher Lucero  
William & Janice Ludwig, Jr.  
Margaret Lykins  
Margy McGroarty Endowment Fund  
Kathy Martin  
Bradley & Rebecca Maxa  
Greg & Melanie McFarland  
McKinney Vehicle Services Inc.  
Lary & Susan Meany  
Mercedes-Benz Club of America  
Michael Mirra & Nancy Sprick  
Multicare Health System  
Jamie & Sandra Murray  
Toby & Laurie Murray  
Paul Newman  
Linda Nguyen  
Donald & Phyllis Ann Nidek  
Northstar Memorial Group, LLC  
Northwest Steel & Pipe, Inc.  
Pacific Northwest Equipment  
Greg & Lori Paine  
Neel Parikh & Patricia Guy  
Steve & Therese Pasquier  
Pierce County Mustang Club

Aaron & Liana Potts  
Christine Quinn-Brintnall  
James & Kathy Rickard  
Renee Robbins  
Rotary Club of Tacoma South  
Joey Russo  
Leo Scaffurion  
H. J. & Patricia Schafer  
Jennifer Schlemmer & Trevor Redfern  
Carolyn Simonson  
Kyle & Gayle Smith  
Southwestern Washington Synod  
St. John Bosco Church  
St. Mark's Lutheran Church  
Stadium Thriftway  
Starr Family Fund  
George & Mildred Stebbins  
Tacoma Goodwill  
Tanz Charitable Fund  
Teamsters Local Union No. 117  
The PNC Financial Members Group  
Robert & Mary Thompson  
Mikal & Lynn Thomsen  
Clarke Thomson  
Ticor Title  
Bob & Candy Tingstad  
Judy Trinkwald  
True Blue, Inc.  
UFCW Local 21  
United Natural Foods, Inc.  
Veterans United Foundation  
Veterans United Home Loans  
Lisa Wagner  
Kenneth & Sheila Wagoner  
Chris & Carol Webster  
George & Wendy Weyerhaeuser  
Weyerhaeuser Company  
Thomas & Marlene Wissler  
Nancy Woodworth  
David & Mary Young  
David & Barbara Young  
Charles & Madelyn Zimmerman

## \$500-\$999

Adair Homes  
Marsh & Helen Allen  
Robert Allen  
Ann and Peter Darling Fund  
Apple Physical Therapy  
Margaret Archer  
Al & Aileen Bacon  
Colette Bailey  
James & Janine Baker  
Paula & Donald Ballantyne  
Daniel & Miriam Barnett  
Marty & Jode Beauvais  
Barry & Sharon Benson  
Broadway Center  
James & Ann Brown  
Frederick & Judith Brune  
William & Sandraki Cammarano, Jr.  
Anthony Chen  
Chilcott Ins. Agency, Inc.  
Dennis & Patty Clark  
Concrete Technology Corporation  
Louis & Dawn Cooper  
David & Florence Covey  
Deborah & Debbie Crawford  
D & D Real Estate Services  
Michelle Dahlen  
Herman & Dorothy Diers  
Richard & Sandy Driskell  
Colleen Dutmers  
Don Dutton  
Dwyer Pemberton & Coulson P.C.  
Edward P. and Juanita J. Miller Fund  
Melissa Elsing  
Emerald Home Furnishings  
Emergency Food Endowment Fund  
Terry & Kay Estvold  
Virginia Ferguson  
Karen Fischer  
Mark & Lindsey Fleischer  
John Folsom & Mary Folsom-Lobrovich  
Laura Gardner  
Andie Gernon  
Ricka Gerstmann  
James & Cathy Giste  
David & Darlene Hale  
Joseph & Kathryn Hammond  
Don & Jean Hansen  
Steve Harlow  
Harold A Allen Company  
Nancy Henderson  
Paul Hensel  
Heritage Bank  
Charles & Rebecca Hoffman  
Mack Hogans  
Bill & Andrea Holt

Hope Lutheran Church  
R. Brian & Carol Howell  
Mike Hurter  
Steve & Debbie Hurter  
Andrea Hynes  
Immanuel Presbyterian Church  
International Longshore and  
Warehouse Union  
Charles & Sheryl Jacobson  
Randy Johnson  
Gretchen Jordal  
Charles Kaperick  
Anne Katterhagen  
Judith Kautz  
Kidder Mathews  
Barbara Kimbrough  
William & Linda King  
John & Nancy Kirner  
Mark & Marie Kitabayashi  
Richard & Joanna Koss  
Don & Anne Kress  
John & Evelyn La Fond  
Martha Larkin  
Steven & Lois Ann Larson  
Rick & Sue Little  
Kristina Logan  
Karen Lone  
John & Sara Long  
Verdelle & Emma Low  
Mary Lyle  
The MacDonald-Will Foundation  
Judith & Patrick Manza  
Mark & Nancy Mathieson  
Matthew G. Norton Co.  
Kenneth Matthews  
Jay & Stella Mayer  
Microsoft Matching Gifts  
Alex Mohit  
Moss Adams LLP  
Mountain Moving & Storage  
Rick & Joan Myers  
Gary & Mary Nadeau  
Neil Walter Co LLC  
Northwest MHP  
Northwest Van Council  
Misty Obrien  
John Olnick  
Pacific Lutheran University  
Stanley & Sharon Palmer  
Park 52 Property Management  
Kenneth & Brenda Parker  
Partners in Lakewood Rotary  
Anthony Paulson  
Steve Pellegrin  
Donald Perry  
N Bracha Pickering  
Michael & Kelly Poth  
Nancy Powell  
Ken & Vicki Powers

Professional & Technical Employees  
Public Works S & G Maintenance  
Puget Sound Energy  
Wendy Pugh  
Quota International of Tacoma  
Rainier Title  
Ed & Sharie Ramos  
Brain & Patricia Randall  
Barry & Rebecca Ray  
Lori Reiman  
Jeffrey Robinson & Mary Dicke  
Diane Roland  
Nina Rook  
Zack & Tamara Rosenbloom  
John Rowley  
Jeffery Sadler  
Abbe Salk  
Phillip & Jean Sanborn  
Kenn Sandell  
Mike & Ann Sanders  
Don Sevin  
Jon Seward & Joanne Henry  
Surinderjit & Sukhjiwan Singh  
Steve Skatrud  
Slavonian-American Benevolent Society  
George Smith & Gail Perstein  
Pamela Smith  
Jim & Megan Stebbins  
Stephanie Stebich  
Denman Sydelle  
Troy & Jean Tackett  
Tacoma Pierce County Bar Association  
Dean & Barbara Tankersley  
The Thompson Smith Consulting Group  
Tom Taylor Insurance Brokers, Inc.  
Amanda Tucci  
Gwen Turbyfield  
UFCW Union Local 367  
John & Marcia Vaccaro  
Neal & Karen Veitenhans  
Marcia Walker  
Gregg & Stephanie Walsh  
Washington Agriculture & Forestry  
Leadership Program  
Washington State Council of Fire Fighters  
Benevolent Fund  
Washington Women's Foundation  
William Wernofsky  
Lynda Westerdaahl  
Joseph & Elizabeth Williams  
Kathy Wilson  
Linda Wyborney  
Robert & Michie Yamashita  
Stuart & Dori Young  
Laurie Youngblood  
Dr. James & Julie Zanner  
Gregory & Karen Zima

**\$1.50 provides 9 meals.**

17.1 million meals were served  
in Pierce County in 2013.





# \$1-\$499

A Steves Pro Truck  
Aadland Engineering, LLC  
Ken Ackerman  
Christine Adams  
Monica Adams  
Myron & Gretchen Alden  
Dennis & Anita Alflen  
Christopher Algeo  
Robert Allen  
Timothy Allen  
Touberman Alliance  
Almond & Associates  
AmericanWest Bank  
Leila Ammann  
Scott Amsden & Jennifer Jacobs  
Debbie Anderson  
Delores Anderson  
Dennis & Patricia Anderson  
Julie Anderson  
Mark Anderson  
Melonie Anderson  
Shelly Andrew  
Gene Ankl  
Anuraj Arakkanparambil  
John & Karen Arbini  
Michelle Arena  
Florence Ariessohn  
Sean Armentrout  
Dana Arnberg  
Keith Arnen  
Arthur & Rosemarie Artz  
Donald Asbury  
Janet Ash  
Jackie Ashley  
Jeff Ashley  
Asian Market II  
Charles Augustine  
Patricia Authement  
Automated Systems of Tacoma, LLC  
Autoworks of Issaquah, INC  
William Baarsma  
Sharon Babcock  
Jo Ann Bach  
Constance Bacon  
Steve & Judy Bader  
Dawn Badger  
Celeste Badgett  
Doug Bae  
Cordell Bahn & Roberta A. Krumm  
Joanie Bailey  
Larry & Eileen Baker  
Tawnee Baker  
Thomas & Margaret Baker  
Ed Baldridge  
John & Martha Bargren  
John Dean & Sally Barline  
Katie Barnes  
Bruce & Marie Barth  
Emma Bartoy  
Jerry & Eiko Bartram  
Stephen Bates  
Herbert & Susan Bauer  
Wolfred & Marlene Bauer  
Larry & Diane Bauml  
Scott Bautista  
William Baxter  
Bayside Gardens Apartments  
Jonathan & Sandra Beal  
Michael Beatrice  
Jim Beaudoin  
Beauty Outlet, LLC  
Michael Beck  
Gerald & Kathleen Beckendorf  
Miles Becker & Chieko Becker  
Dorothy Beckstead  
David & Nancy Beers  
Veronica Beitia  
Constance Bender  
Richard & Karla Benedetti  
Amelia Benitez  
Monte Benn  
Gordon Benson  
Frances Bentley  
Joseph & P. Bentvelzen  
Cheryl Berg  
Berg Equipment & Scaffolding  
John Bergford  
Claudia Berguson  
Fred Bernal  
Darci Bernard-Pettibone  
Lois Best  
Richard & Joy Best  
Robert & Kathleen Bethke  
Thonse Bhat  
Kumar Bhatia  
Biltmore Motel, Inc  
Charles Bingham

Neil Birnbaum & Carol Lasley  
Alex Bittmann  
Callie Jo Black  
Gerry & Nancy Blank  
Neil & Janice Blindheim  
Donald Blucher  
Blue Steele Coffee Co  
The Bob and Mary Hammond Family Fund  
Dale Bobb  
Deborah Boczar  
Bruce & Debbie Bodine  
Bodytime Chiropractic  
Beth Boggs  
Mary Bohn  
Bok's Cafe  
Lester Bona  
Deborah Bonilla  
Joel Bonney  
Ahna Boone  
Phil Boudwin  
Steve Boustead  
Charlotte Boutz  
Bethany Bowlby  
Frances Bowman  
Tyler Boyer  
Susannah Boyland  
Sally Boyle  
Patricia Brabham  
Gary & Jacqueline Brackett  
Linda Brackney  
Christina Bradshaw  
Griffin Brady  
Michael & Hae Yon Brandstetter  
Keith Brandt  
Paul & Leslie Brantner  
Roberta Brasier  
Louise Bray  
James Brayton  
Jan Brazzell  
BRC Family LLC  
Dianne Breen  
Andrew Breslow  
Gina Breukelman & Frank Rottell  
Laura Brewer  
Pat Brewer  
Greg & Cathy Brewis  
Thomas Breyer  
Robert Breeze  
Brians Floor Covering Service  
Stephen Bridgeford  
Bridgeview Estates  
Kristi Briggs  
Linda Kaye Briggs  
Patricia Briggs  
Drew Britten  
Sterling & Kate Brodnjak  
David Brown  
Donald Brown  
Kathy Brown  
Kenneth Brown  
Richard Brown  
Tracy Brown  
Verna Brown  
William Brown  
Brandon & Tiffany Bryant  
Genevieve Bryant  
Jerry & Carol Bryant  
Joye Bucklin  
Andre Buckmon  
Brenna Buckstaff  
Budget Signs  
Lynnette Buffington  
M. David & Carolyn Bugher  
Karen & Karen Burd  
Todd & Heather Burgess  
Joan Burns  
Michael Burris  
Jane Burster  
Alice Bush  
Allen & Linda Bush  
Thomas & Diane Butler  
Rick Butner  
John & Lisa Butson  
Deborah Buttorff  
Maurice & Mary Byrd  
Joy Caddock  
Elaine Cady  
Daniel Caine  
Jon Calder  
Peter Callaghan & Susan Dardarian  
Stephen & Susan Campbell  
Steve Campion  
Gnanulan Canagaratna  
Scott & Catherine Candler  
Susan Canfield  
Alfred & Annelies Caprez  
American Heart Association  
Terri Card  
Career Path Services  
Career Pathways  
George Cargill

Richard Carlisle  
Donald & Carolyn Carlson  
Kelly Carlson  
Lisa Carlson  
Bruce & Donna Carmichael  
Richard & Frances Carr  
Charles & Sandra Carter  
Jennifer Carter  
Elmer Casaday  
John Caulfield  
Eric & Tenley Cederstrand  
Centro Latino  
Ray & Charlotte Chalker  
Todd Chambers  
Christopher & Jennifer Chancellor  
Cal & Kathy Chandler  
Kathryn Chapman  
Scott & Mary Chapman  
Chapter DE of PEO  
William & Jeanne Charlton  
Sin Ying Chau  
Judi Chelotti  
Jason Cheng  
Linda Chesney  
Alex Chow  
Troy & Karen Christensen  
Patricia Chubb  
Brian & Vicky Churchill  
Robert & Doris Claypool  
Robert & Deanna Cleaveland  
Nancy Clemons  
Leah Coakley  
Wanda Coats  
Rick & Christy Coburn  
Matt Cochran  
Lisa Cody  
Aaron & Courtney Cohen  
Alvin Coit  
James Colburn  
Bill & Gertrude Colby  
Teresa Colby  
Chris Collie  
Van & Julie Collins  
Perry & Sandra Colombini  
Commercial Brokers Association  
of South Sound  
John & Stacie Conkle  
Dianne Conway  
Steven & Georgiann Conway  
Bruce Conyers  
Charles E. Cook & Kevin W. Herrick  
Steven Cook  
Joseph & Sigrid Coppola  
Richard & Robin Corak  
Wesley & Tammy Corey  
Ralph Corkrum  
Paula Correll  
Pat & Luann Corso  
Kim Cosgrove  
Marie Coss  
Rachael Costner  
Gary Coy  
Tom & Fae Crabill  
Kendall Craven  
Bill Crawford  
James Crawford  
Jillian Cross  
Kari Cross  
Erin Culbertson  
Pat & Paula Cummings  
Stephannie Dahl  
John & Kathleen Daly  
Donne & Lisa Daniels  
Cynthia Darland  
Germaine Dart  
Jerry Davidson  
Roger & Barbara Davidson  
Albert & Rachel Davis  
Dorothy Davis  
Katherine Davis  
Kathryn Davis  
Thomas & Patricia Davis  
Alison Dean  
Florence DeBruler  
David & Jody Degroot  
Almir & Vesna Delic  
Jerry & Julene Delo  
Randy & Cindy Dennewith  
Robert Denomy  
Charles Dent & Wendy Hogan Dent  
Maria DeVore  
John DeYoung  
Mary Dicke  
Robert & Judy Dickson  
Rhona Diehl  
Mary Dill  
Leda Dizon  
Georgia Doane  
Tina Doane  
Dock St. Litigation & Valuation  
Adam Dockstader

Janice Doctor	Jessica Gavre	Elizabeth Heath
Susanne Donaldson	John Gazecki	Hans Hechtman
Michael Donnelly	Genuine Auto Glass	Kathryn Hedrick
David Doris	Linda Gerull	Kara Hefley
Bryan & Janice Dorwin	Renae Gese	Jen Heinrich
Georgina Douglas	Patricia Gessler	Chuck & Suzanne Hellar
Paul & Jane Dow	Laurence Gezelius & Dawn Umstot	Daryl Hembry
Robert Drake	Jerry Gibbs	Whittaker & Shirley Hemion
Nancy Draper & Craig Schweikart	Kenneth Gibson & Aimee Collins	Mike & Nancy Henderson
Robert & Deborah Drugge	Gary & Lorraine Gieser	Gary Hendricks
Devere Duby	Gig Harbor Counseling	David Henry
Faith Ducatt	Marguerite Giguere	Heritage Bank
Patrick Duffy Jr	Douglas Gilbert	Alisha Hernandez
Yolanda Duralde, MD	Henry Gillard	Eric Herrmann
Dan & Lori Durr	Eric Gilman	Jack & Julie Hersey
Denise Dyer & Daniel Schnabel	La Von Gilmore	Joni Herwick
Eleanore Dzija	Lee & Elizabeth Gingrich	Rebecca Hester
James & Catherine Ebbert	Robert & Lori Girvin	John & Patricia Hickey
Francisco Ebreo	Michael & Kelly Philip Givens	Phyllis & Carson Hickey
Kerri Eckels	Marilee Glasman	Raema Hickey
Rosemary Eckerson	Glastonbury Police Officers Association	Miguel Hidalgo
Diane Edison	Ian & Linda Gleadle	Tracie Hiemstra
Talmage & Molly Edman	Nancy Glen	Craig & Ginger Hill
Jennifer Edwards	William & Shirley Goelzer	Debra Hill
Julie Ehnat	Blake Goldberg	Rolland & Dorothy Hill
George & Sharon Eide	Timothy & Patty Golob	Steve Hill
Joel & Jacqueline Elliott	Emily Gomes	Teri Hochstein
Joanna Ellis	Robyn Goodwin	Ralph & Minh Anh Hodge
Tim Ellis	Britt Gordon	Patricia Hodges
Tony Ellis	Joe & Sandra Gordon	Gary & Becky Hoff
Claudia Ellsworth	Larry & Virginia Gordon	Wynn & Margie Hoffman
Larry & Carol Else	Troy & Brandy Gorelick	Richard & Julia Hoffmeister
Brien & Cathy Elvins	Carl & Violet Gove	Carl & Betty Hogan
Tony Emery	Clarion & Eileen Grabanski	Beverly Holmes
Rick & Marvalee Enloe	Clifford & Vera Jo Grace	Brandie Holmes
Evelyn Enslow	Ronald & Sandra Graf	Kathleen Holmes
Ken Enslow	David & Erika Graff	Kaye & Barbara Holmes
Corey Epperson	Rick & Christy Graham	Leonard & Sandra Holmes
Allan & Lynn Epstein	Shawna Grambo	Diane Holmstrom
Jeanne Erickson-Deaton	Rollin & Judy Grams	Stephanie Holthaus
James & Virginia Eshelman	Esther Grant & Kristine McLean	HomeStreet Bank
Arlo & Sandra Eslinger	David Grass	Bruce & Lynette Hopkins
Dakota Estal	Glen & Marlene Graves	Susan Horgen
Veronica Estira	Robert & Randy Graves	William & Rowena Horn
Christine Estrada	Graybar	Shelton & Jessica Horton
Evergreen Community Church	Carol Green	Larry & Theresa Hosley
Evergreen Referral Service	Steven Green	Gilbert Hough
Claudine Falk	Jim & Wendy Griffin	House Of Royce
Stephen Farber & Phyllis Harrison	Dave & Rindi Griffith	Mark Houtchens & Pat Hackett
Milton Farvour	Rod Groce	John & Sylvie Howard
Ursula Faust	Patrick Gross	Joshua Howard
Mike & Sandy Fedasch	Mark & Nancy Grubb	Monica Howard
Donna Feldman	Michael & Julia Grubiak	Richard Howard
Richard Ferraro	Roger & Shirleen Gruener	David Howe
Bruce & Heidi Ferrier	Samantha Guillot	George & Kim Howe
Pamela Fick	John Gulhaughen	John Howe
Mark & Maureen Fife	Jeff & Debra Gumm	Marion Howe
Figures	Gus Paine Insurance	Ross Syford Hoyle
Fircrest Presbyterian Church	Dori Gustafson	Harvey & Grace Hrvatin
First Presbyterian Church of Kent	Paul Gustie	John & Rebecca Huber
FISH Food Banks of Pierce County	Howard Guy	Carol Hudgins
Harrison & Priscilla Fisher	Patrick & Karen Haas	Mary Hufford
Robert & Phyllis Fisher	Dan Haeg	Tom & Nicole Hume
Michael & Nancy Fitta	Richard & Muriel Haglund	Mark & Maryann Hummel
Gary Fitzpatrick	Christiana Haldane	Sean Hummel
Dennis Flannigan	Alan & Linda Hall	Larry & Natalie Humphrey
Michele Flinner	Dale & Susan Hall	Lauren Humphrey
Bryan Flint	Dave Hall	Wendy Huntington
Tim & Marcey Flood	Gabby Hall	Clarence Hupp & Julie La Freniere Hupp
James Florian	Jason Hall	Clyde Hupp
Patricia Flynn	Jerry Hallman	Heidi Hurst
Sam Fogerty	Gina Hames	Patricia Hutchinson
Mandon & Kelly Foley	Lansing Hamilton	Laura Huysman
Dennis & Jolee Ford	Kenneth Hamrick	Charlie Hyde, III
Michael Fornerette	Debbie Hankins	Hydro Physics
Fortt Business Sales, INC	Katherine Hanna	Carolyn Hyke
Helen Fox	Michael Hansch	Ignite-U
Daffodil Auxillary # 2308 Fraternal	Teresa Hanson	Larry Ikenberry
Order of Eagles	Harborstone Credit Union	Patricia Illman
Joseph & Iris Fredenburg	John & Pat Harbottle	Independent Insurance Agents & Brokers
Graham & Anna Frederick	John & J.T. Harbottle, III	Virginia Ingram
Tyler Frederick	Sterling Harders	Shirley & Daniel Inveen
Robert Fredrickson	Dan & Diane Hargreaves	Don & Debbie Irwin
Burman & Nancy Freeman, Jr	Charles & Elizabeth Harkins	Donald Izenman
The Friday Lunch Bunch	Dennis & Evelyn Harlowe	J. Morgan & Associates
Peggy Fuchs	Lisa Harper	Khristinia Jackson
Trudy Fujioka	Chelsea Harris	Michael & Debi Jackson
Full Gospel Holy Light Church	Cody & Carlin Harris	Willett Jackson
Joni Fuller	Lance & Mary Harris	Theodore Jacobs
Alison Gaffin	Jackie Harrison	Jean Jacobson
Douglas Gaj	Daneen Hart	Paul & Anne Jacobson
Diane Gallagher	Rex & Tana Hasart	Jehna Jamero
James & Linda Gallinatti	Mary-Ann Hash	Allan & Barbara James
Hillary Gandy	Ed Hathaway	Houk James
Raymond Gardner Jr.	Melissa Hausmann	Michael Jarvis & Craig Larson
Steve Garitone	Janis Hawkins	Krissy Jasper
John Garner & Caroline Harris	Bart Hayes	Gloria Jemstone, L.L.C.
Evan & Fay Garrett	Phillip & Sally Hayes	Howie Jensen & Cindy Bouillon-Jensen
Michael Garrity & Elise Richman	Arne & Carolyn Haynes	Solweig Jensen
Shelly Garton Garzon	Donna Haynes	Dwight & Patrice Jewson
Heather Gary	Janet Hazelton	David Jiles



JL Nichols & Associates Inc

Melinda Jobst

John & Vicki Langrell

Gordon Johns

Anna Johnson

Beau Johnson

Chris & Susan Johnson

Edward Johnson

Kelly Johnson

Michele Johnson

Siggy Johnson

Cheryl Johnston

William & Kristine Johnston

John Jolibois & Jannae Mitton Jolibois

Allen Jones & Candy Beckwith

Matthew Jones

Rebecca Jones

Robert & Ruth Jones

Thomas & Jean Jones

Elaine Jonson & Carol Galloway

Kim Josue

JP Morgan Chase & Co.

Stuart & Lynn Julin

Kyle Jung

Hume Kading

Phyllis Kaiser

Madaline Kane

Abraham Kannankeril

Narasimha Kanuparthu

Sally Kapphahn

Laura Kapuscinski

Marilyn Karlstrom

Bob Katika

Gary Kato

Maarten Kattouw

Suzanne Kautter

Bonnie Kay

Dan & Melinda Keane

Lester Keel

Keesal & Logan Young

Jaime Keith

Susan Keith

Benjamin Keller

D. Reed & Laurie Kelley

Kathy Kennedy

Key Antiques

Kevin Killeen

Kil Kim

Sook & Sang Kim

Christopher & Vicki Kimball

Charles Kimble

Maury & Lori Kincannon

Bernadine King

Megan Kingsley Gale

Dennis Kirby

Gail Kirk

John & Mary Kirk

Morris & Bette Kirk

Kiwanis Club of Tacoma

Robert & Byrna Klavano

David Klavens

Jeff Klein & Jessica Sommerville

Marc & Barbara Klein

Ron & Margo Klein

Nancy Kleinschmidt

Donald Kleiven

Cindy Klett

Mary Klimek

Suzanne Klimek

Cynthia Kling

Kevin Knieri

Rich & Rene Knudson

Hugh Kodama

Tiffany Koenig

Stan Kohout

Karen Kolley

James & Cindy Komorous

Kone Consulting

Margaret Kraft

Jay Kramer

Bruce Kranak

Karl & Lois Kreitzer

Leta Kremer

Richard Krones

Allen Kruger

Bart & Liudmila Kryger

Robert & Sheila Kryger

Marcy Kulland

Peggy Kunigk

William Kupinese

Christopher Kwoka

Michael & Krystal Kyer

Bryan Laflamme

Manuel Lambert

Becky Lamont

George & Rose Landeis

Roseann Lane

Richard & Sherri Lange

Cynthia Lantry

Martha Lantz & Andrew Fitz

Walter & Martha Larkins

Jamie Larsen

Linn Larsen

Nic Larsen

Chad Larson

Paula Larson

Rick & Lori Larson

Thomas Larson

Todd Larson

Vernon Larson

Grant Lau

Marty Laurine

Keith & Shannon Laviola

Dave & Kim Lawson

Marceline Lazzari

Ngoc Le

Triet Le

Bonnie Lee

Bradford Lee

Babe Lehrer

Bradford Leibbrand

Justin Leighton

David & Dolores Leister

LeAnne Leistiko

Mary Lellouche

Peter & Jiffy Lemcke

Robert & Rosemary Lenigan, Ph.D.

Greg & Charlene Lenti

Todd LePique & Lisa Barbano

Les Schwab Tire Center

Lavita Lester

Robin Lester

Brian Lewis

Lexus of Tacoma

Dean & DJ Lietzau

Lift Pilates

Margaret Lin

Patrick Lindenbach

Ed Lisle

Canyon & Andrea Little

Patrick Liu

Tonya Locken

Anna Loomis

Marcia Looper

Robert & Janet Lordahl

Katherine Louise Dorr

Allison Low

Christine Lowery

Greg & Jacqueline Loyer

Elizabeth Luikin

Nancy Lunsman

Vicki Lutes

David & Lynn Lutz

Michael Lynes & Sonja Maddox

Elizabeth Lynn

Lori Lynn

Bruce & Pualla Lyons

Keith & Marjorie Madlena

Ronald Magden

Ronald & Linda Magid

Catherine Mahan

Patricia Main

Lawrence & Laura Majovski

Cheryl Malicoat

Thomas Maliska

Sonya Manejkowski

James & Bonnie Manke

Marjorie Mankin

Brian & Katrinka Mannelly

Mary Manning

Guy & Janet Marsh

Peter & Susan Marsh

Mary Marshall

Bruce & Lisa Martin

Steve Martin

Thomas & Betty Martin

Warren & Elizabeth Martin

Karen Martinac

Marilyn Martinetto

Bernard Dean & Julie Marucci

Kim Marvik

Mashell Telecom, Inc

Donald & Cecilia Maskell

James & Mary Mason

David Massey

Dylan Mathews

Gary & Linda Matteson

James Mattson, Jr.

Charlie & Kathy Maxwell

James & Susan Mayer

Kevin Mayher

Christi McCarren

Sandra McCauley

Thomas & Catherine McDaniel

David & Suzanne McDonald

Carolyn McDougal

Dave & Debbie McEntee

Marjorie McGinnis

Rebekah McGinnis

John & Nancy McGinnis, Jr.

Kathleen McGoldrick

Betty McGovern

Karen McGrath

PJ McGuire

Robin McIlvaine

Philip McKay

Barbara & Tim McKee

Sharon McKinley

Allan & Sally McLean

Mary McManus

Earl McNally & Nargo Forstrom

Patricia McNeal

C & J McNeely

Aisling McNeilly

Girard McNulty

Chris McPhail

Dean & Joan McSweeney

Mario & Kathy Meconi

WH Meadowcroft

Mary Meek

Judy Melo

Perry & Angela Menard

James & Claudia Merritt

David & Kathryn Meyer

Donna Meyerhoff

Joyce Miceli

Debbi Midkiff

Christina Mihal

Jim Milgard

Alicia Miller

Donna Miller

John & Pamela Miller

Marylynn Miller

Linda Miller-Robinson

Breta Millhouse

Glen Mills & Angela Cassidy

Rob Mitton

Ralph & Julie Mix

Joy Mizushima

Lowell & Margaret Moholt

Michael & Margaret Moline

Marie Monahan

Wayne Mondou

Todd Monohon

Paul & Joanna Monroe

Bob Moore

Hugh Moore

Jerry & Barbara Moore

Maggie Moore

Marilyn Morgan

Mary Morgan

Todd & Lillian Morrow

Timothy & Tammy Moses

Daniel Moson

Suzie Motto

Mike Mowat & Janet Runbeck

Knud & Jessica Muentner

Mark & Amy Mulder

Christina Mungaray

Dianne Murdock

T Murlidharan

Betty Nabozny

Michael & Dawn Nanfito

Lee and Amanda Nathan

Joe & Suzy Nealson

Doug & Heather Neff

Andrew & Marie Neiditz

David Nelson

Mark & Kimberley Nelson

Mary Nelson

Noel Nelson

Terri Nelson

Robert Newell

J.R. Newman

Scott Newman

Diem Hong Nguyen

Hung Nguyen

Thuc Nguyen

Vivian Nguyen

Nancy Nichols

Gale Nickel

David Nogle & Kathy Westerdahl

Mark & Margaret Norman

Northwest Harvest

Joan Norton

Joseph Novak

Nutri-West

Joe & Barbara Oates

Madison O'Bagy

Peg Oberg

Patrick & Janet O'Brien

Michael O'Connor

Sheila Ogburn

Ed & Stacey Ogle

Patrick O'Hara

Mary Oldfield

Lisa Oldoski

Daniel & Kelly O'Leary

William & Susan Olsen

Tuong Ong

Alex Osborn

Jack & Betty Osborn

Hans & Jacquelyn Ostrom

William & Frances Ostruske  
David & Elinor Ottey  
KC Overton  
Kamran Ozair  
Arthur Ozolin, M.D.  
PEO Chapter F J  
Vern Page  
Richard Pain  
Steve Paine  
Willie Painter  
Janet Palmer  
Tony Pantley & Cecilia Hogan  
David Parent & Christine McAllister  
Nancy Paris  
Andrew Parlin  
John Parrott  
Fred & Susan Pasquale  
Morgan Pasquier  
Carole Pauw  
Jan Pauw  
Arthur Pavey  
Peace Lutheran Church  
Tracy Peacock  
Calvin Pearson  
Charles Pearson  
Erin Pearson  
Eugene Pearson  
Alice Peebles  
Ronald Pemberton  
M. Penalver  
Ovidio & Andre Penalver, MD  
Cari Pendergrass  
Bobbi Pennell  
Crystal Perez  
Christie Perkins  
Lisa Petek  
Maris Peters  
Jackie Petersen  
Jay & Kristeen Petersen  
Randi Peterson  
William & Mignonne Peterson  
John Petrinovich  
Daniel Petzoldt  
Nancy Pfefferle  
Elizabeth Pfeiffer  
Pham Khoa  
Greg Piacitelli  
Picture Tacoma  
Pierce County ITD  
Pierce County Public Works & Utilities  
Pierrot Pierre  
Mary Plante  
PNW New Horizons Band - Tacoma  
Celeste Poechhacker  
Kristi Pointer  
Thomas & Merita Kay Pollard, Jr.  
James & Kathy Polo  
Kym Porreca  
Mickey Portnoy  
Posh Rat Productions  
John and Karen Post  
Stephen Poteet  
Bill & Susan Potter  
George & Shelly Potter  
Lorraine Irene Potter  
Lisa Powell  
Pamela Powell  
Hugh & Sandy Powers  
Dolores Pratt  
Russell Preuit & Barbara Carmichael  
Tracy Prezeau  
Joyce Price  
Karen Prim  
Primary Residential Mortgage  
Prismantas  
Progressive Rail  
Patricia Prokopovich  
Pro-Vac  
Proventur International, Inc.  
James Pruitt  
William Pryor  
Public Utilities Toasmasters Club 4958

Puget Sound Assisted Living, Inc.  
Puget Sound Energy  
Puget Sound Sumi Artists  
Marcel Purdy  
Timothy & Brenda Puryear  
Dan Putnam  
Quaker Oats Pepsico  
Patricia Quantz  
Kyle Quaranto  
Dirk Rabadau  
Sandeep Raichur  
Norma Ramirez  
Rose Ransom  
Candace Rao  
Kotamarti Rao  
Gerald & Joan Rapp  
Allen & Marilyn Ratcliffe  
Ray Rathwick  
Linda Raymond  
John & Sandra Reardon, Jr.  
Kathy Reardon  
Red Cloud Cafe Queen Bee  
Redford Family Partnership  
Debbie Reece  
Darwin Reed  
James Reed  
Brian Reeder  
Timothy Regier  
Robin & Linda Rego  
Emily Reiter  
Joseph & Lavonne Reiter  
Relay for Life Tacoma  
Bryan Rennaker  
Bryan & Nicole Ressler  
John Retherford  
Sheila Retherford  
Paul & Susan Rezentes  
Tim & Vickie Rhee  
Nancy Rice  
John Richards  
Douglas & Charlene Richardson  
Sue Richey  
Craig & Marie Richmond  
Elizabeth Richmond  
Patricia Richmond  
Brandy Ride  
Teri Rideout  
Denise Rider  
John & Gayle Rieber  
Lynn Riegel  
Cassie Riendeau  
Nancy Rieper  
William & Ann Riley  
Deanna Rink  
Donald & Renee Ripley  
James Roberts  
Sandi Roberts  
Carol Robinson  
Lisa Robinson  
Mike & Julie Robinson  
Leroy Rodenberg Jr  
Alvin Rodriguez Santiago  
Bruce & Raelene Rogers  
Roman Meal Company  
John Rose  
Nancy Rose  
William Rose  
Sandra Roszman  
Sherrill Rotchstein  
John & Mary Rowlands  
Florence Rowling  
William & Sandra Rudd  
Kirk & Sharon Rue  
Nick Ruff  
Lynne Rumball  
Mark Runions  
Randy & Karen Rushforth  
Wendy Russo  
Joseph Ryan  
Kelly Ryan  
Evelyn Saathoff  
April Sage

Joy Sage  
Tim Samlaska  
Julie Sandberg  
Joy Sandler  
Katie Santiago  
Paul Sass  
Mike & Sue Saunders  
Derek Saunders  
Matthew Saunders  
John Searcy  
Jennifer Schaal  
Jeff Schaffrath  
Werner Schardt  
Dennis & Barbara Schatz  
Michael & Jodina Schauer  
Lindsey Scheffler  
Rose Scheidt  
Kurt & Debbie Schley  
Christine Schmechel  
Suzanne Schmidt  
William Schmidt  
Clifford & Judy Schmitt  
Stephen & Teresa Schneider  
George & Barbara Schoch  
Schramm Marketing, LLC  
Liz Schroedel  
Hedy Schroeder  
Mary Schroeder  
Paul & Nancy Schroeder  
Mel Schuckenbrock  
Darren & Jordan Schuldheiss  
Judith Schuler  
Pam Schuler  
Diane Schultz  
Kim Schultz  
Shirley Schultz  
Reuben Schutz  
Francis & Winni Schwartz  
Joseph Scorcio  
Barbara Scott  
Cathy Scott  
Heidi Scott  
Thomas Scott  
Stephen Scown  
The Seattle Foundation  
Karen Seinfeld  
Gayle Selden  
Evelyn Sellers & Michael Weinman  
Gregory & Zari Semerdjian  
Shikhil Seth  
Carey Severa  
Gary & Katharine Severson  
Marc & Maria Sevier  
Haley Sharman  
Douglas & Alice Sharp  
Sallie Shawl  
Leslie Shea  
Jeff Shearer  
David & Carol Sheean  
Linda Shelton  
Sarah Shives  
David & Sharon Sidor  
Joel Siegel  
Micheline Sierer  
Alicia Sigala  
Signs By Tomorrow  
Mike Silbaugh  
Silver City Brewery, LLC  
Mary Lou Simons  
Pakun Sin  
Timothy & Susan Sinclair  
Larry Sipple  
Mary Sircello  
Kimberly Skagen  
Jacki Skaught  
James Skeen  
Tomie Skramstad  
Judith Sloan  
Steven Sloboda  
Adam & Daneille Small  
SMC Marshals Guild  
Barbara Smith

**For every \$1 donated, Emergency Food Network distributes \$12 worth of food to low-income families and individuals.**



Brian Smith  
 Joann Smith  
 Lori K. Smith  
 Michael & Gretchen Smith  
 Michael Smith  
 Robert & Madelyn Smith  
 Rod & Liz Smith  
 Rodger & Andrea Smith  
 Sandra Smith  
 Shelby Smith  
 Stephen Smith  
 Nanette Smyser  
 Mark Snyder  
 Patricia Sobczyk  
 Janis Soderlind  
 Robert & Denise Sokol  
 Lorrie Solari  
 Jack & Betsy Sonntag  
 Jane Sonntag  
 Allan Sorensen  
 James & Bernita Sorensen  
 Lee & Diann Sorensen  
 Soroptimist International of Tacoma  
 Joseph Sosky  
 Robert & Carol Sotnik  
 South Tacoma Neighborhood Council  
 Dale & Mary Beth Sowell  
 Claire Spain-Remy  
 Richard & Margaret Spangler  
 Penny Specht  
 Bob & Kathy Spence  
 John Sperling  
 Gayle Sreibers  
 Rich Staatz  
 Tara & Dominic Staeheli  
 Sara Steel  
 Josephine Steele  
 Thea Steele  
 John A. & Cindy Stella  
 Jackie Stenger  
 Ruth Stevick & Lynn Grace  
 Jack & Terri Stewart  
 Leslye Stewart  
 Willie C. Stewart, USAR Ret  
 Keith Stickney  
 Lynette Stixrud-Lampson  
 Georgia Stone  
 Joan Strait & Gail Strait  
 David Strong  
 Matthew Studer  
 Suburban Opticians  
 Joan Sullivan  
 Superior Linen Service  
 Rudy Sutlovich  
 John & Marti Sutton  
 Gaylen & Dolores Swearingen  
 Chellis Swenson  
 Paul Swinehart  
 Darrel Sylvia  
 John & Sharon Szumlas  
 Tacoma Garden Club  
 Tacoma Rotary Fundraising  
 Tacoma Trains & Hobbies  
 Tahoma Fuchsia Society  
 William Talty  
 Alexey Tarasov  
 Suzanne Tarp-Thompson  
 Brian Taylor  
 Peter & Kristine Taylor  
 Thomas & Mary Lou Tebb  
 Carl Teitge  
 Karin Teles  
 Tern Pension Services  
 David Terrill  
 The Club at Gig Harbor  
 The Keimig Associates Architects-  
 Planners  
 The Mary Lucile Born Trust  
 Sylvia Thomas  
 Steve & Barbara Thomason  
 Brad & Joan Thompson  
 David Thompson

Milton & Anita Thompson  
 Steve & Pat Thompson  
 Christopher Tice  
 Susan Timm  
 Marilee Titus  
 Leon & Marcianne Titus  
 Richard & Jennifer Tobin  
 Michelle Todd  
 T.M. & Rebecca Tomal  
 Marvin & Melissa Tommervik  
 John Tomow  
 Donald & Beth Torbet  
 Samuel Torvend  
 Charles & Elizabeth Totten  
 Mark Tran  
 Pamela Transue & Stuart Grover  
 Sara Trela  
 Lawrence & Jane Treleven  
 Pradip Trivedi  
 TriWest Healthcare Alliance  
 Edward & Pam Trobaugh  
 Eleanor Troxell  
 Mai Truong  
 Anthony Truxal  
 Molly Tuohy  
 Patricia Turner  
 TwinStar Credit Union  
 Elizabeth Ugarph  
 Sally Underwood  
 University of Puget Sound  
 Greg Unruh  
 Gregory Unterbrink  
 Terrill & Beverly Utt  
 Robert & Molly Vail  
 Tanesha Van Leuven  
 Patricia Vance  
 Elvin & Doris Vandeberg  
 Mary Jane Vandenberg  
 Leo & Janice Vandervort  
 Jeff Vaughn  
 Teresa Velasco  
 Mike & Emily Verdonck  
 Michael & Sue Veseth  
 Susan Vestal  
 Shannon Vicic  
 Bob Villano & Naomi Sullivan  
 Brooke Villano  
 Valorie Vincent  
 Mellisa Vincett  
 Roger & Florence Vining  
 John & Dorothy Vipond  
 Nicholas & Mary Vitullo  
 Loan Vo  
 Fred Vogel  
 Lydia Volberding  
 Hedi Wachter  
 WACO, LLC  
 Corydon & Judy Wagner  
 Lisa Wagner  
 Patricia Wagner  
 Kristina Waldron  
 George & Jill Walk  
 Lew Wallon  
 Christine Wang  
 Kelly Wang  
 Patrick & Lisa Ward  
 Stanley & Vickie Ward  
 Allan Warner  
 Robert & Alicia Warren  
 Wilma Warshak  
 Washington Women's Employment  
 and Education  
 Colleen Waterhouse  
 Keri Waterland  
 Anne Watkins  
 Diana Watts  
 David Webb  
 Julie Webb  
 Toni Weber  
 Weinman Consulting Services  
 Carolyn Weisz  
 Robert & Linda Welander

Donald & Wanda Wentworth  
 Barbara Werschkul  
 Amy Wertz  
 John & Audrey West  
 Thomas Westgard  
 William & Gail Weyerhaeuser  
 Julie Whalen  
 John & Patricia Whalley  
 Chris Whane  
 James Wheeler  
 James & Kathryn Whitacre  
 Karyn Whitacre  
 Jacqueline White  
 Mark & Ann White  
 Lynn Whitesell  
 James Whittier  
 Belinda Wicklund  
 Eugene & Kathleen Wiegman  
 Johanna Wiese  
 Kris & Brenda Wiest  
 Joe Wilczek & Karen Garvey-Wilczek  
 Karen Wild  
 Larry & Darlene Wilder  
 Susan Wilkie  
 Susan Willhoft  
 Beverly Williams  
 Desiree Williams  
 Dwight & Stephanie Williams  
 Jeffrey Williams  
 Melody Williams  
 Tasha Williams  
 Thomas & Marcy Williams  
 Kristine Willson  
 April Wilson  
 Joan Wilson  
 Peggy Wilson  
 Sharon Wilson  
 Thomas & Bonnie Wilson  
 Charlyn Wingard  
 Kevin Wingfield  
 Donald & Shirley Winnie  
 Scott & Carla Winship  
 John & Dede Winters, DDS  
 Vicky Winters  
 Laura Wisdom  
 John Wise  
 Douglas Wiseman  
 Elizabeth Wittenberg  
 Beatrice Wo  
 Gertrud Wolfbauer  
 Sandra & Owen Wollum  
 Jason Wong  
 Jowene Wong  
 Cary & Mary Wood  
 Chiara Wood  
 Gaylen & Carol Wood  
 Judith Wood  
 Rex & Judith Wood  
 Steven Wood  
 Richard Woodard  
 Tyson Woodruff  
 John & Judy Woodworth  
 Carol Woolery  
 Helen Wright  
 Robert Charles Wright  
 Sally Wright  
 Laura Wulf & Laurie Jinkins  
 Al Wurth & Annette Deweese-Wurth  
 Gary & Mandy Wyatt  
 Lenore Wyatt  
 Mark Young  
 Patti Young  
 Roger & Debra Young  
 William & Gwen Young  
 Zack Rosenbloom & Associates, P.C.  
 D. P. Zelle  
 Robert & Audrey Zimmerman  
 Peter & Terry Zitka  
 Dan Zukowski  
 Annette Zweig  
 Amanda Zylstra



# THANK YOU



OF TACOMA AND PIERCE COUNTY

3318 92ND STREET SOUTH  
LAKEWOOD, WASHINGTON 98499

*Thank you to our  
generous sponsor!*

**KeyBank Foundation**



NON-PROFIT  
U.S. POSTAGE  
PAID  
TACOMA, WA  
PERMIT NO. 77

RETURN SERVICE REQUESTED

If your name is incorrect or you are receiving duplicate mailings, please call 253-584-1040.  
Emergency Food Network does not sell or exchange mailing lists.